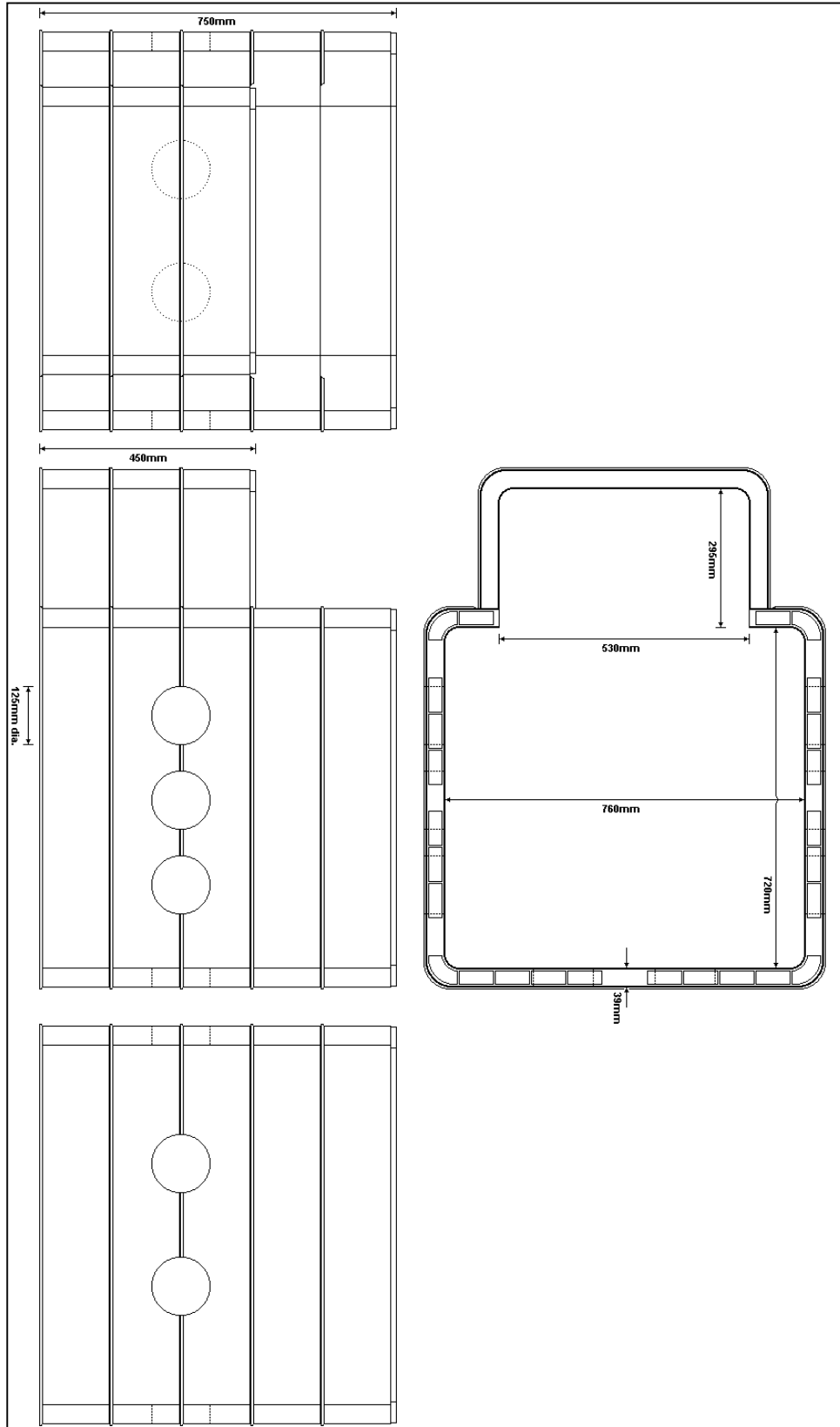


ULTIMA STAKKAbOX ESB Pillar Chamber



APPLICATION: The product is designed for use in foot way installations where it acts as both the underground support for a Mini Pillar Cabinet and provides the chamber for accessing it. It does this by having an underground extension to one side of the chamber wall.

1.0 PART NUMBER	1002520
2.0 STANDARD DESCRIPTION	ULTIMA Stakkabox; Pre-formed access chamber complete with mini pillar support extension. 760mm x 720mm clear opening x 750mm deep chamber, with 530mm x 295mm clear opening extension.
3.0 MATERIAL	SMC (Sheet Moulding Compound) Glass re-enforced Polyester Resin. 15% Glass.
3.1 TEMPERATURE RANGE	-60cC to +160oC
3.2 FIRE RESISTANCE	Low resistance standard Material, Full Class A Material Available
4.0 STANDARD COLOUR	Grey
5.0 REFERENCE STANDARDS	EN124 B125 & D400 Vertical Loading requirements BS5834.Part4.1993 Side Wall loading for small chambers BS 1247 Part2 Cold Impact test EN 228 Resistance to Petrol and Chemicals EN295-3 Stress Relief BS2782 Part4 Methods 430A to 430D Water Absorption
6.0 PACKING	1 unit per pallet. Pallet weight 78kG, 52 units per truck/container (40 foot)
7.0 UNIT WEIGHT	78kG
8.0 DIMENSIONS	Please refer to product drawing
9.0 INSTALLATION	Please refer to our Field Installation Guide: FIG001a annex 3
10.0 RELATED PRODUCTS	
10.1 Frames & Covers	1000000 Class B125 Ductile Iron, Twin Cover. 765mm x 720mm clear opening. Complete with removable frame bar to provide access to mini pillar.



NOT DRAWN TO SCALE